

Micro Moulded Boots

Lipped

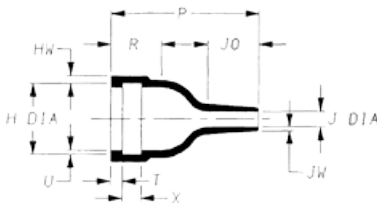
Straight and Right Angle 90° boots



204W221-xx



Before Recovery

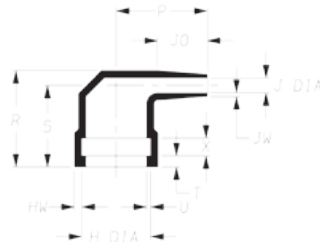


After Recovery

224W221-xx



Before Recovery



After Recovery

Product Dimensions Selection Table

Dimensions as Supplied			Dimensions After Recovery										
Dimension	H	J	H	J	P ±10%	R ±10%	S ±10%	T ±10%	U ±10%	X ±10%	JO ±10%	HW ±20%	JW ±20%
Material	25,12*												
Part Number													
204W221-xx	11	11	9.3	2.1	19	6.5	-	1.5	0.55	2.4	6.6	1.0	0.5
224W221-xx	11	11	9.3	2.1	12.3	13	11	1.5	0.55	2.4	6.6	1.0	0.5

Note * Please check dimensions for -12 material as may differ, as supplied dimensions may be slightly reduced due to the nature of the material. After recovery sizes are not affected.
All dimensions in millimetres unless otherwise stated.

Ordering Information

- Standard colour Black.
- Size selection please refer to the table above.
- Specify the product name, material and coating required, as per example.

Part Number Example:

224W111-25-0

Right angle 90° moulded part in fluid resistant elastomer, colour black.

Materials Available

Material	Material Description
-12	Fluoro-elastomer
-25	Fluid resistant elastomer

Environmental Adhesives Available

Optional Pre-coat	Optional User Applied
/225	S-1255-04
/225	S-1017 or S-1048 or S-1125

For more information on materials and adhesives, please refer to relevant sections of this catalogue.