

Cable Management

MLT Series

Pan-Steel® Steel Cable Ties

Features and Benefits

Perfect for indoor, outdoor, underground, offshore and RMT applications offering excellent resistance to abrasion, radiation, weathering, corrosion and extreme temperatures. Stainless Steel ties are self-locking for fast cabling and can be installed by hand or with tooling.

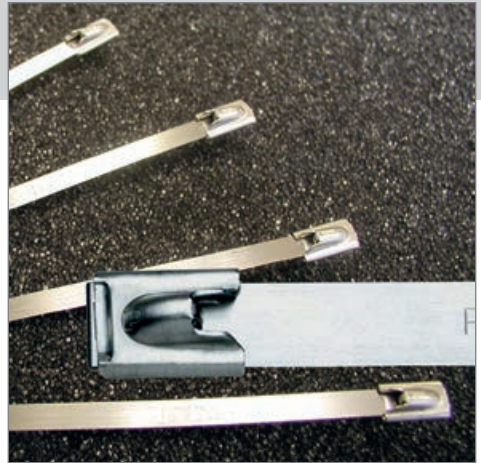
Manufactured with fully rounded sides and no sharp edges, making them safe to handle during installation. Strap goes through a secondary process which removes the top and bottom corners of the material.

Features & Benefits

- Self locking design speeds installation and locks into place at any length along the body.
- Provides a strong durable method of cable bundling.
- Fully radiused sides and edges.
- Temperature tolerance -80°C to 538°C

Material Options

- Grade AISI 304 Stainless Steel, for general purpose applications. Supplied as standard.
- Grade AISI 316 Stainless Steel, for the most corrosive environments. Add suffix '316' to the part number.



Approvals

- UL Listed E56854
- SAE AS 23190 (formerly MS23109E)
- Det Norske Cert. # E-6540, E-6539 (AISI 316)
- Lloyds Cert. # 89/60123
- MIL-STD-202
- MIL-STD-167 and MIL-S-901D for Extra heavy and super heavy cross sections.

Self Locking Head Construction

***Aggressive Locking Head**
Quicker locking, tighter installation

***Lead in Design**
Wider entrance for easier threading

Unique Locking Ramp
Assures locking in any position

***Innovative Displacement Lock**
Assures superior locking strength

Extended Retaining Tab
Increases overall tie strength

* Patented

Part Number System

Various packaging and material options are also available as outlined below;

	MLT	6	Size. Approx bundle Dia. (inch)
	MLT6	S	Standard
		LH	Light Heavy
		H	Heavy
		EH	Extra Heavy
		SH	Super Heavy
	MLT6S-	CP	Standard packaging 100 pcs.
		L	Standard packaging of 50 pcs.
		Q	Standard packaging of 25 pcs.
	MLT6S-CP	-	AISI 304 Stainless Steel (blank)
		316	AISI 316 Stainless Steel

Additional Variants Available

- **LH.** Light Heavy cross section, offering tensile strength up to 1112N.
- **EH.** Extra Heavy cross section, offering tensile strength up to 3115N.
- **SH.** Super Heavy cross section, offering tensile strength up to 4005N.

Available in broadly similar sizes as per table below. Other lengths are also available to special order.

For enquiries on standard or specials please contact us for further details.

MLT6S-CP316 Part Number example

Stainless Steel cable tie, for max bundle dia. of 152mm, packed in 100pcs, AISI 316 grade.

Order Description	Length	Width	Thick	Max. Bundle Dia.	Min. Bundle Dia.	Min. Tensile Strength	Recommended Installation Tool
MLT - Standard Cross Section Ties - AISI 304 Stainless Steel							
MLT1S-CP	127	4.6	0.25	25	12.7	890N	GS4MT, HTMT, PPTMT, ST2MT.
MLT2S-CP	201	4.6	0.25	51	12.7		
MLT2.7S-CP	259	4.6	0.25	69	12.7		
MLT4S-CP	362	4.6	0.25	102	12.7		
MLT6S-CP	521	4.6	0.25	152	12.7		
MLT8S-CP	679	4.6	0.25	203	12.7		
MLT10S-CP	838	4.6	0.25	254	12.7		
MLT12S-Q	998	4.6	0.25	304	12.7		
MLT14S-Q	1156	4.6	0.25	355	12.7		
MLT15S-Q	1250	4.6	0.25	380	12.7		
MLT - Heavy Cross Section Ties - AISI 304 Stainless Steel							
MLT2H-LP	201	7.9	0.25	51	12.7	2000N	GS4MT, ST2MT, HTMT, PPTMT, PBTMT
MLT2.7H-LP	259	7.9	0.25	69	12.7		
MLT4H-LP	362	7.9	0.25	102	12.7		
MLT6H-LP	521	7.9	0.25	152	12.7		
MLT8H-LP	679	7.9	0.25	203	12.7		
MLT10H-LP	838	7.9	0.25	254	12.7		
MLT12H-Q	998	7.9	0.25	304	12.7		
MLT14H-Q	1156	7.9	0.25	355	12.7		

Dimension in millimeters unless otherwise stated.